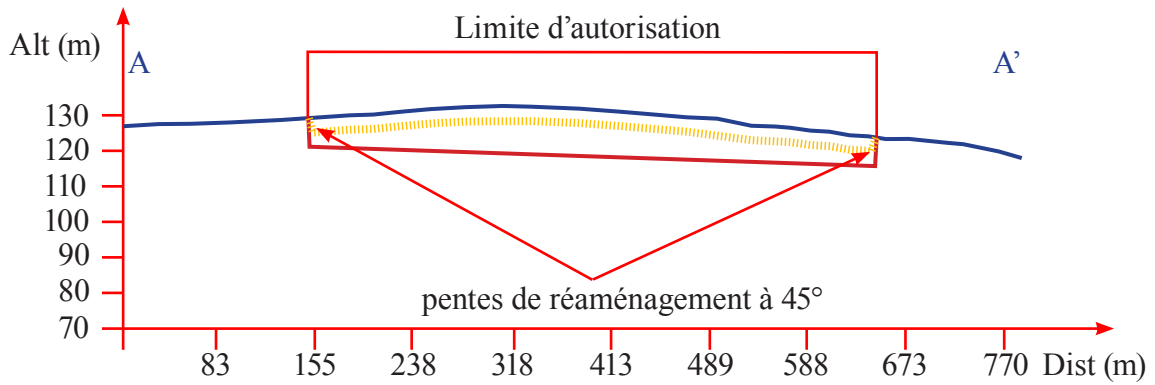
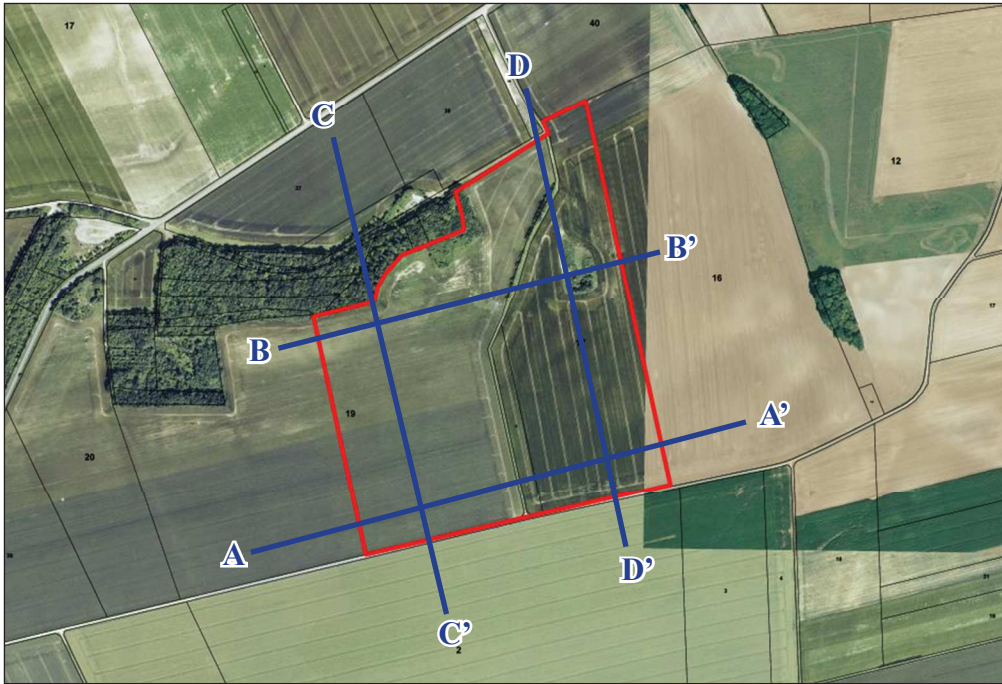
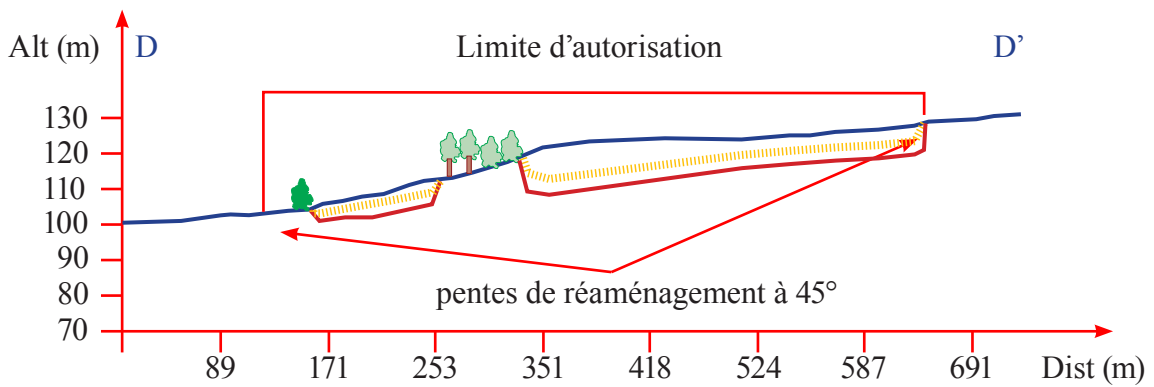
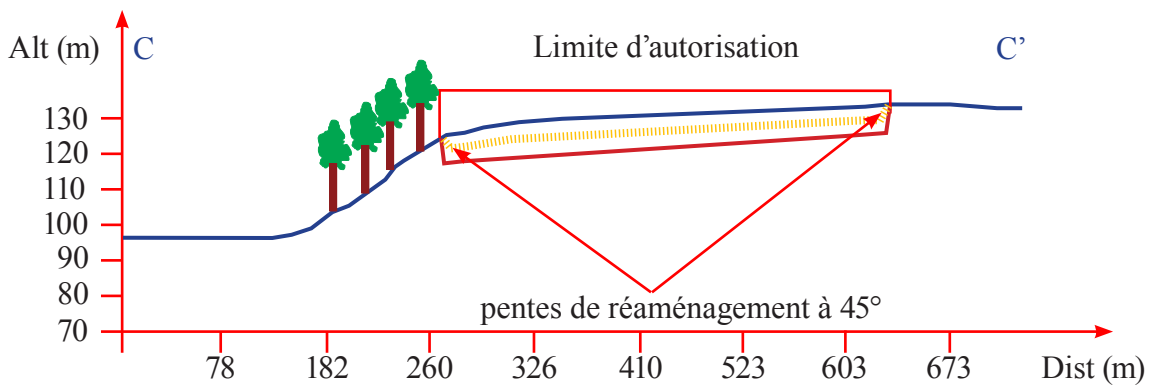
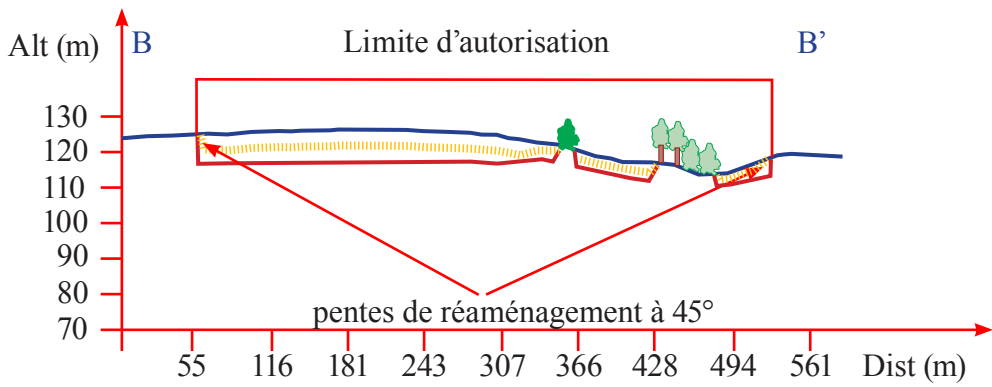


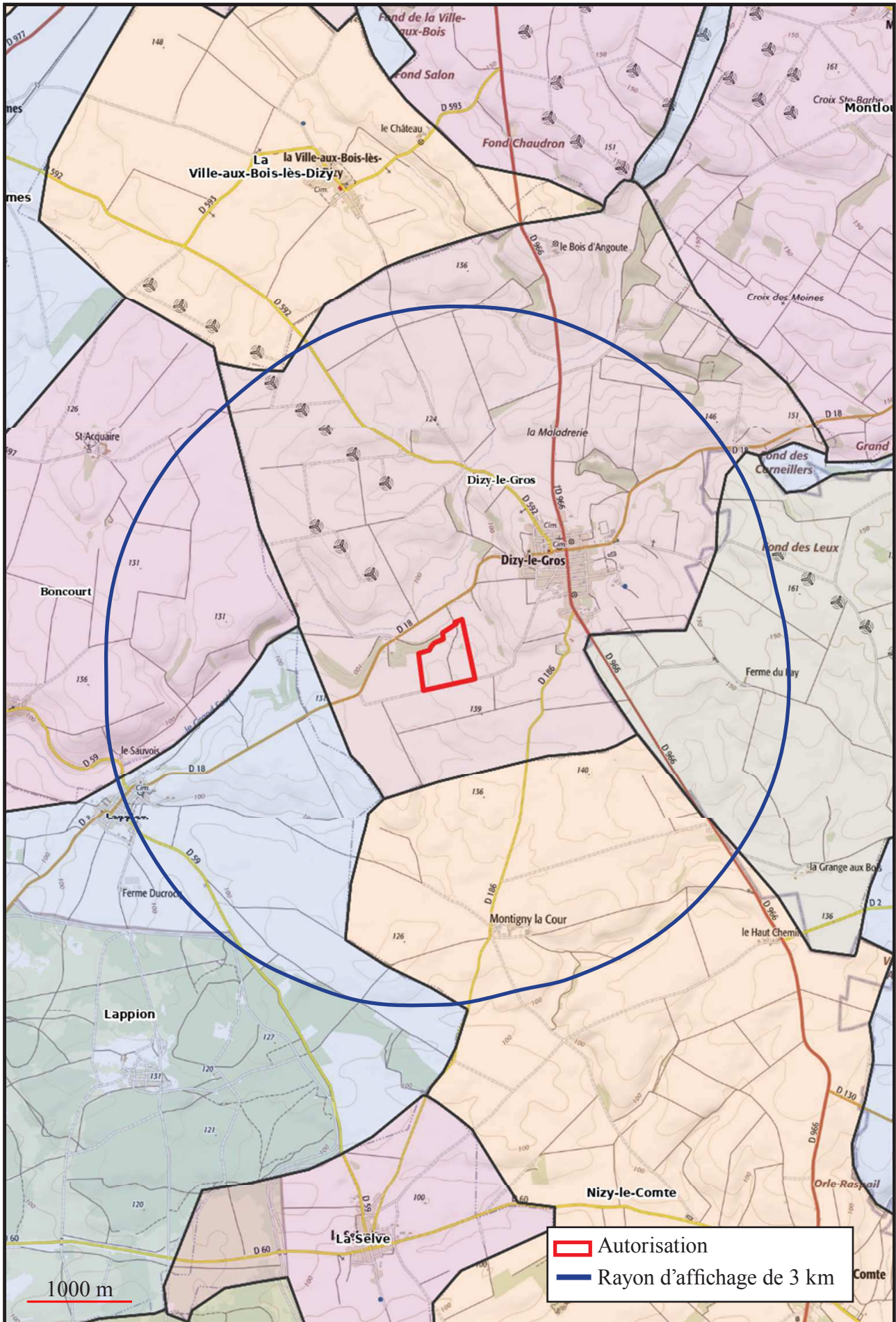
COUPES ALTIMETRIQUES



- Profil topographique naturel
- Profil minimum d'extraction
- Profil de réaménagement en culture
- Boisement
- Haie
- Friche ancienne carrière

NB : L'effet d'échelle accentue les pentes





LOCALISATION DU SITE AU 1/50 000

PLAN DE PHASAGE

